



RS **RS**
200 **400**

RS200 & RS400, Southern Championship 2024

Killaloe Sailing Club

Saturday 7th Sunday 8th September 2024

Sailing Instructions

The notation '[NP]' in a rule of the sailing instructions (SIs) means that a boat may not protest another boat for breaking that rule. This changes RRS 60.1(a)

1. Rules

- 1.1. The event is governed by the rules as defined in The Racing Rules of Sailing and the class rules of the RS400 & RS200.
- 1.2. Racing rules Race Signals AP, 31, 33, 35, 44.1, 60.1(a), 60.1(b), 61.3, 62.1(a), 62.2, A2 A5.1 and A5.2 will be changed. The changes appear, in full, in these sailing instructions.

2. Changes to sailing instructions

- 2.1. Any change to the sailing instructions will be posted before 09:00 on the day it will take effect, except that any change to the schedule of races will be posted by 20:00 on the day before it will take effect.

3. Communications with Competitors

- 3.1. The official notices will be posted in the Whatsapp Group , this can be joined by following this link <https://chat.whatsapp.com/FOUrGb8tqXoFTa5p3TA0HX>



4. Code of conduct

- 4.1. [DP] Competitors and support persons shall comply with reasonable requests from race officials.

5. Signals made ashore

- 5.1. Signals made ashore will be displayed at the main club mast beside the green Shed.
- 5.2. When flag AP is displayed ashore, '1 minute' is replaced with 'not less than 45 minutes' in Race Signals AP. This changes race signals AP.

6. Schedule of races

- 6.1. Schedule

Date	Races
Saturday 7 th September	Up to 4 races
Sunday 8 th September	Up to 4 races

- 6.2. The scheduled time of the first warning signal for the first race on Saturday 7th September 2024 is 11:55. The scheduled time of the first warning signal for the first race on Sunday 8th September 2024 is 10:55.
- 6.3. To alert boats that a race or sequence of races will begin soon, the orange starting line flag will be displayed with one sound signal at least five minutes before a warning signal is made.
- 6.4. 6.4 Race 4 may be run on the Saturday at the discretion of the Race Committee. To indicate this intention the finish boat will display flag Numeral 4 at the end of Race 3.

7. Class flags

- 7.1. RS 400 RS 400 Class Flag or if not available Numeral 1
- 7.2. RS 200 RS 200 Class Flag or if not available Numeral 2

8. Racing area

- 8.1. Racing will take place within a defined racing area on Lough Derg

9. Courses

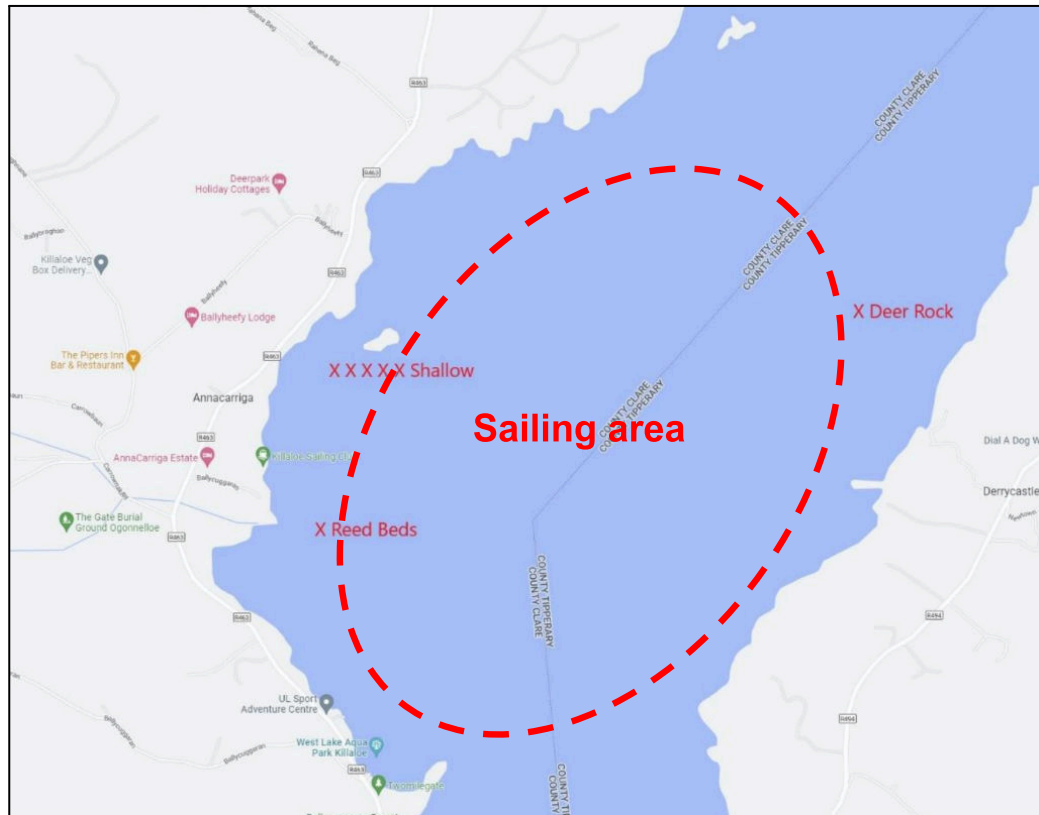
- 9.1. A Windward leeward course will be used. The diagram in Addendum A shows the course, the order in which marks are to be passed, and the side on which each mark is to be passed.
- 9.2. The course to be sailed will be indicated by boards on the side of the committee boat. 10

10. Marks

- 10.1. Marks will be described in the briefing.
- 10.2. Hitting a mark other than the start or finish marks will not be penalised for the RS400 and RS200 class only. This changes RRS 31.
- 10.3. If one or other of the gate marks is missing, the remaining mark shall be rounded to port.

11. Obstructions

- 11.1. The following are obstructions – Deer Rock Marked on the Map below in a red X, There are also reed beds in various locations, and shallow ground near Goat Island all shown as red X's



12. The start

- 12.1. The starting line will be between a defined Location on the committee boat displaying an orange flag at the starboard end and the course side of a port-end starting mark.
- 12.2. A boat that does not start within 5 minutes after her starting signal will be scored Did Not Start without a hearing. This changes RRS A5.1 and A5.2.

13. Change of the next leg of the course

- 13.1. To change the next leg of the course, the race committee will move the original mark (or the finishing line) to a new position.
- 13.2. Minor course changes may not be signaled. This changes RRS 33.

14. The finish

- 14.1. The finishing line will be between a defined location on the committee boat displaying a blue flag at the starboard end and the course side of the port-end finishing mark.

15. Penalty system

- 15.1. See NoR 12.

16. Time Limit

- 16.1. Boats failing to finish within a 15-minute finishing window after the first boat in her class sails the course and finishes will be scored Did Not Finish without a hearing. This changes RRS 35, A5.1 and A5.2
- 16.2. In addition to RRS 32, the race committee may also award a finishing score to a boat that is still racing by displaying to her from a committee vessel (which may

be in motion) flag W with one sound signal. A boat so notified is no longer required to sail the course, shall stop racing and shall return to the starting area, or return ashore if there is no more racing. A finishing score under this sailing instruction will be the score she would have received had she sailed the course and finished within any time limit, without gaining or losing any place. However, when two or more boats that are overlapped are notified, they will be scored as if they were tied. The decision by the race committee to use this procedure or not to use it shall not be grounds for requesting redress. This changes rules 60.1(b) and 62.1(a).

17. Hearing requests

- 17.1. The protest time limit is 90 minutes after the last boat has finished the last race of the day or the race committee signals no more racing today, whichever is later. This changes RRS 61.3 and 62.2.
- 17.2. Hearing Request forms are available at the race office.
- 17.3. Notices will be posted no later than 30 minutes after the protest time limit to inform competitors of hearings in which they are parties or named as witnesses. Hearings will be held in the protest room at common room inside KSC Club house

18. Scoring

- 18.1. As per NoR 13

19. Safety Regulations

- 19.1. [DP] [NP] A boat that retires from a race shall notify the race committee as soon as possible.

20. Replacement of crew or equipment

- 20.1. [DP] [NP] Substitution of competitors is not allowed without prior written approval of the race committee.
- 20.2. [DP] [NP] Substitution of damaged or lost equipment is not allowed unless authorised by the race committee. Requests for substitution shall be made at the first reasonable opportunity.

21. Equipment Checks

- 21.1. [NP] A boat or equipment may be inspected at any time for compliance with the class rules, notice of race and sailing instructions.

22. Official Vessels

- 22.1. Official vessels will be identified at the Initial Briefing.

23. [DP] [NP] Support teams

- 23.1. As per NoR 14

24. Trash disposal

- 24.1. Trash may be placed aboard official or support person vessels.

25. Berthing

- 25.1. [DP] [NP] Boats shall be kept in their assigned places in the dinghy park.

26. Prizes

- 26.1. As per NoR 19.

27. Risk statement

- 27.1. As per NoR 17.

28. Insurance

28.1. As per NoR 18.

ADDENDUM A – Courses

Windward – Leeward with Spreader

S2	1, 2, 4P/4S, 1, 2, 4P, Finish
S3	1, 2, 4P/4S, 1, 2, 4P/4S, 1, 2, 4P, Finish
S4	1, 2, 4P/4S, 1, 2, 4P/4S, 1, 2, 4P/4S, 1, 2, 4P, Finish

Marks 4P/4S are a gate
Marks 1 and 4P to be rounded to Port
RS 400 Class will use Mark 1A & 2A instead of Mark 1 & 2

Windward – Leeward

L2	1, 4P/4S, 1, 4P, Finish
L3	1, 4P/4S, 1, 4P/4S, 1, 4P, Finish
L4	1, 4P/4S, 1, 4P/4S, 1, 4P/4S, 1, 4P, Finish

Marks 4P/4S are a gate
Marks 1 and 4P to be rounded to Port
RS 400 Class will use Mark 1A instead of Mark 1